



Building floats above ground

Receiver related information

Height of 1. receiver above GF [m]:

Height of floors [m]:

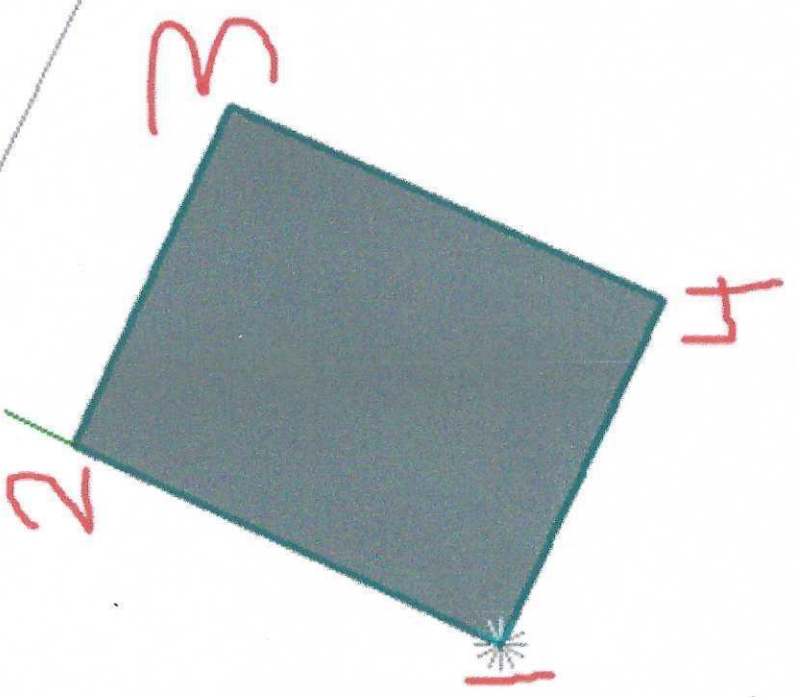
Number of floors

Label for the first floor

Number of additional basement floors:

Area usage

Residential scattered



Geometry

Height definition absolute

	X [m]	Y [m]	H
> 1	351463,05	6421730,24	
2	351468,46	6421741,66	
3	351477,48	6421737,41	
4	351472,28	6421725,85	

STADSSKOGEN 2:70>1

My infiltration 2x9 meter

STADSSKOGEN 2:72>1

STADSSKOGEN 2:71>1

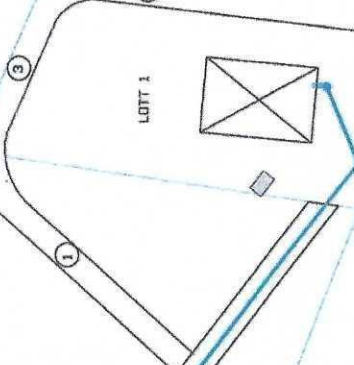
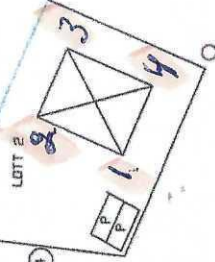
105

114
116,5
116

5'66



- ① Lutning 8%
- ② Vårplats 3,5x10 m
- ③ Lutning 11,63%
- ④ Lutning 8%



733,5
76,5
72,5
73,5
74,5
71,5

77
76,5
74,5

77,5
82,5
82,5

72

73

ROOKWIPATEN 444
STADSSKOGEN 2:71
LOTEN 2